

1	DATE	REVISION
1	07/17/08	ISSUE FOR BID
2	07/17/08	SEE ADDENDUM
3	07/17/08	SEE ADDENDUM

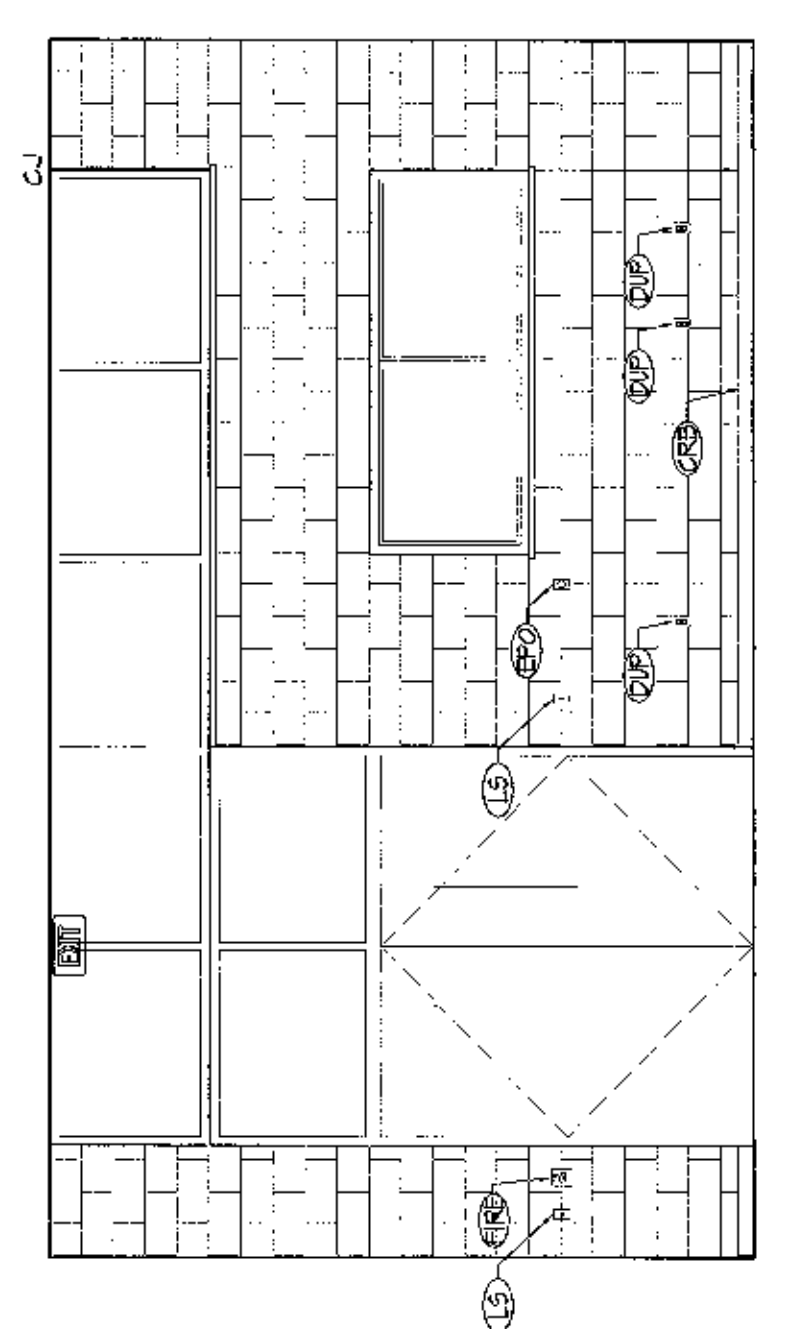
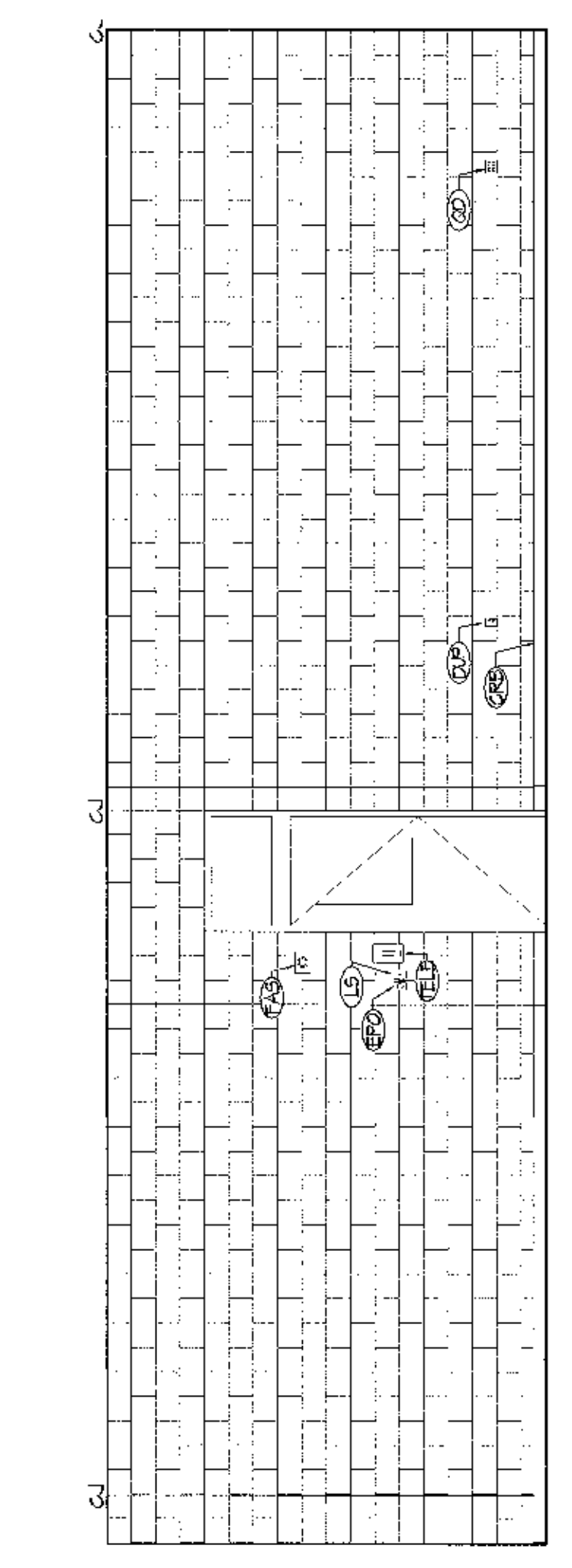
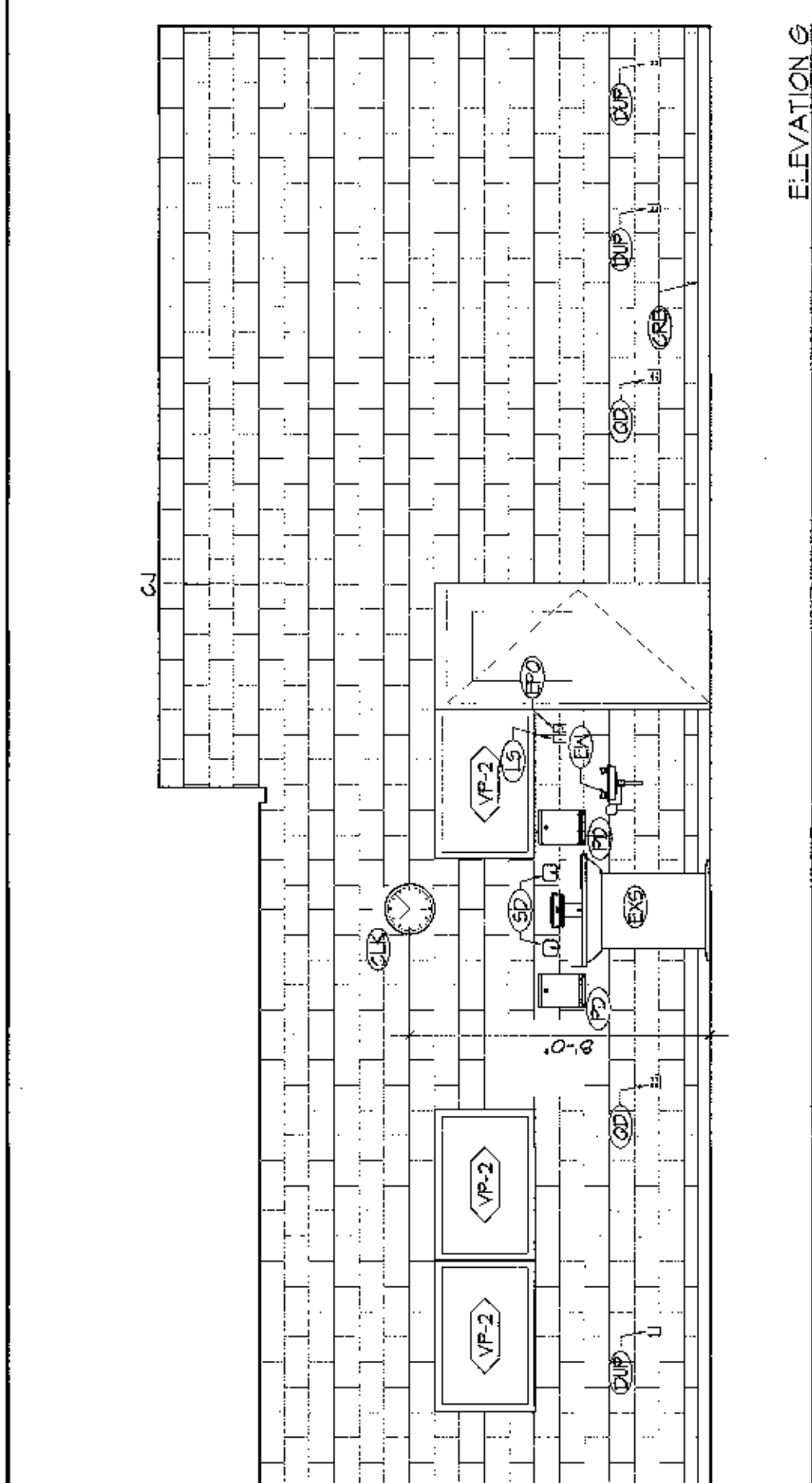
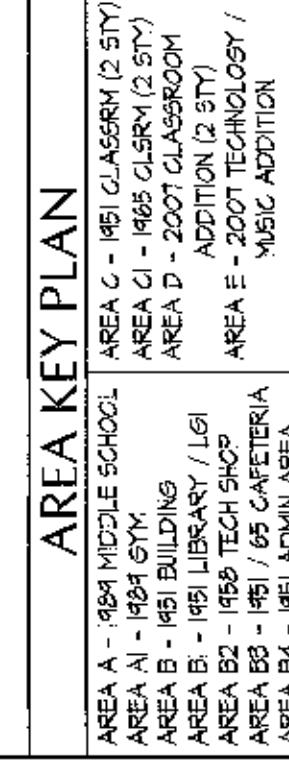
Drawn By: **DJV**
 Checked By: **DJV**
 Project No.: **08-01-01-002-003**
 Date: **09/27/2007**

ENLARGED PLANS AND INTERIOR ELEVATIONS-TECHNOLOGY

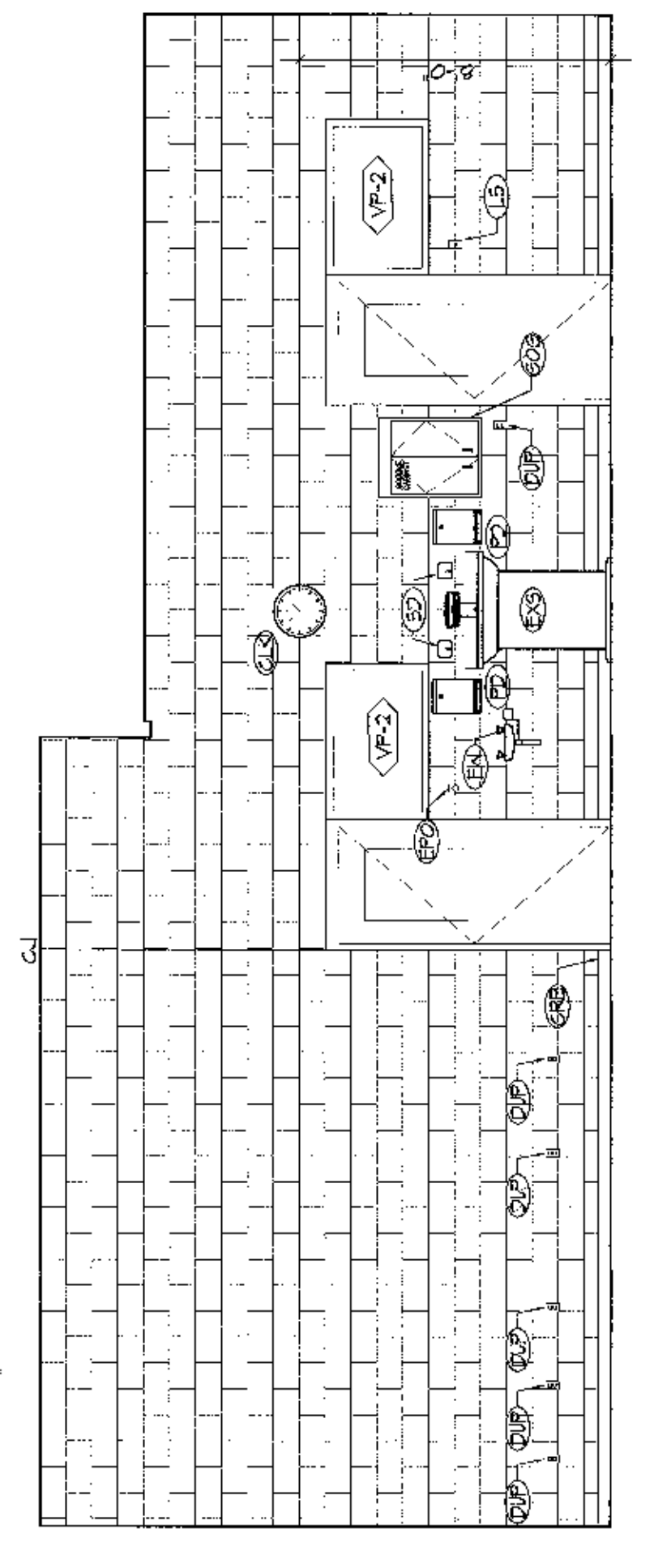
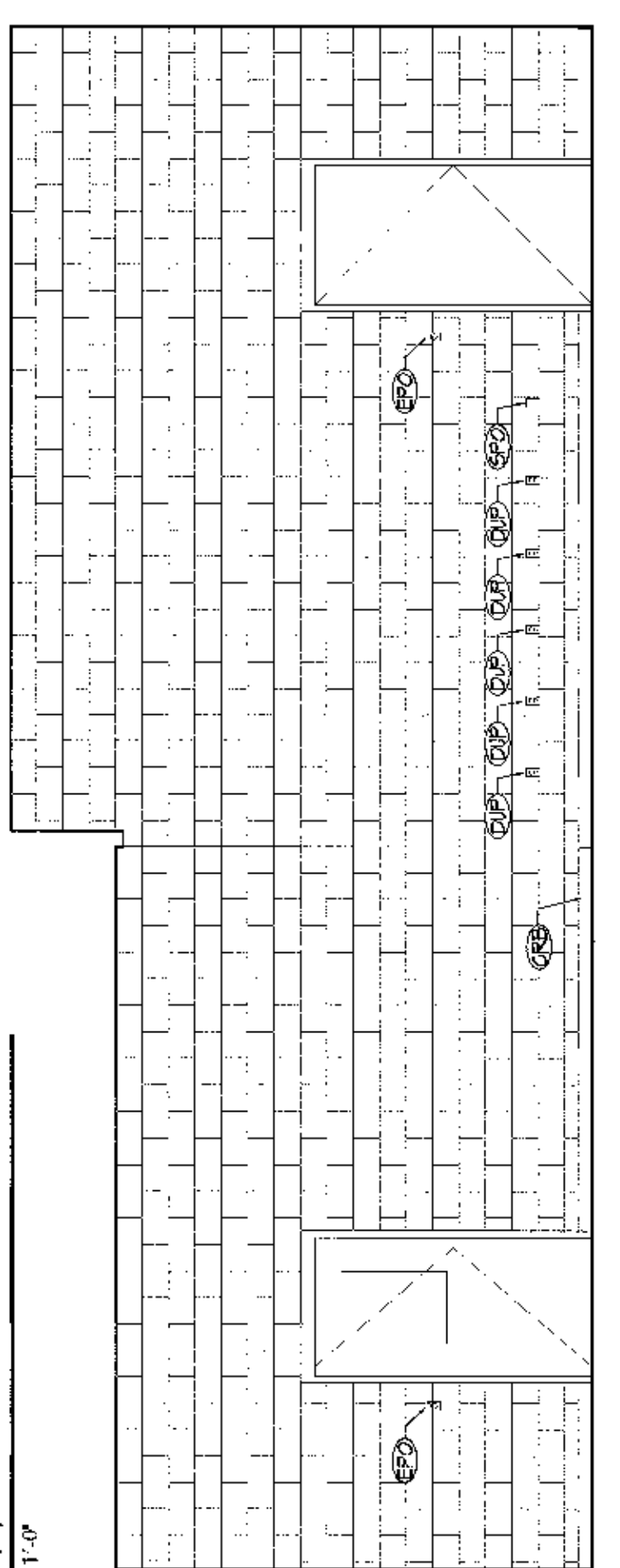
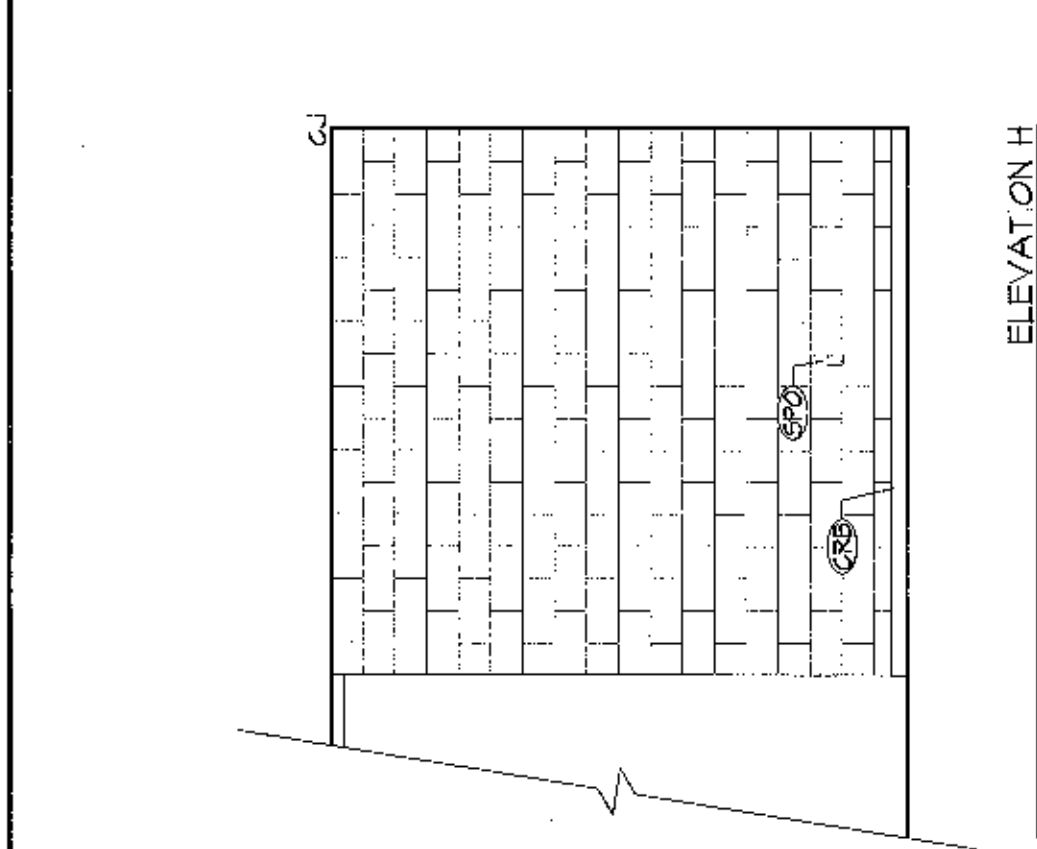
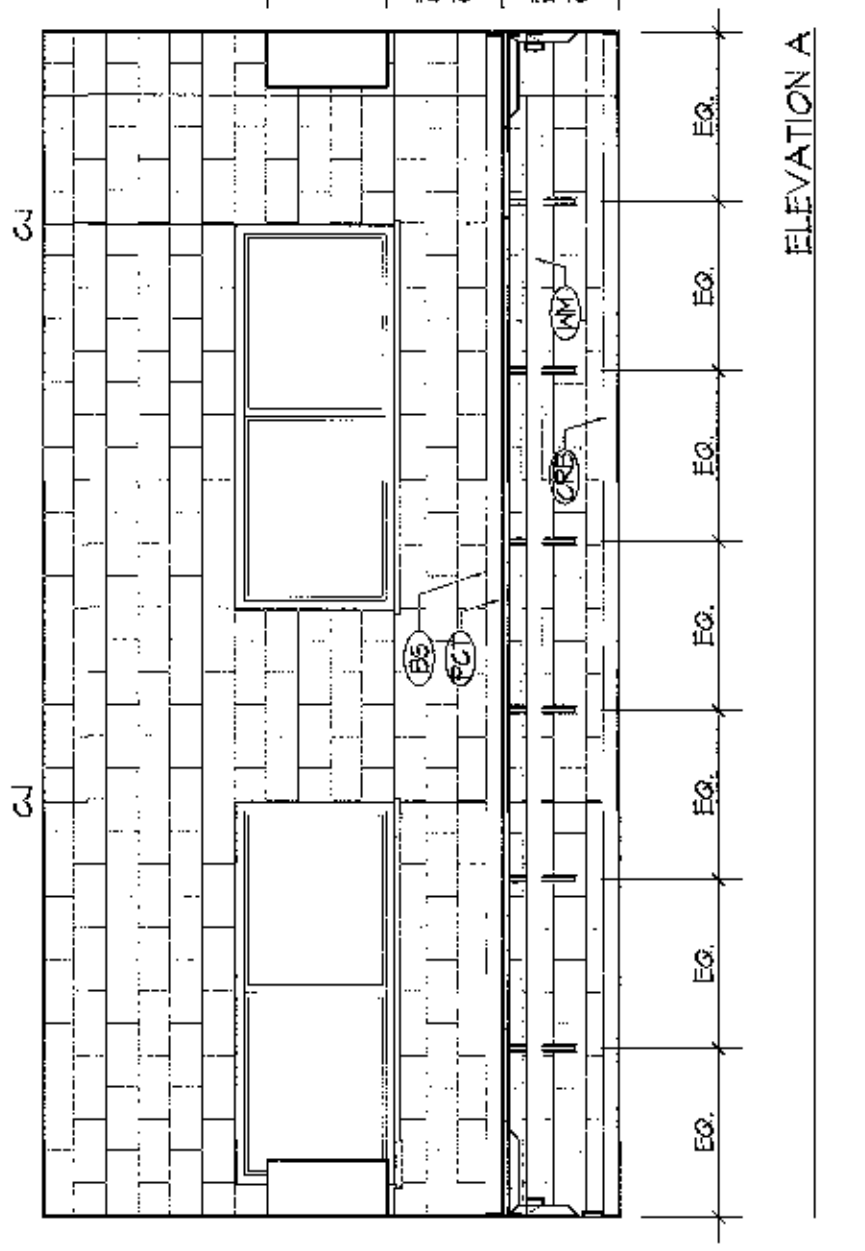
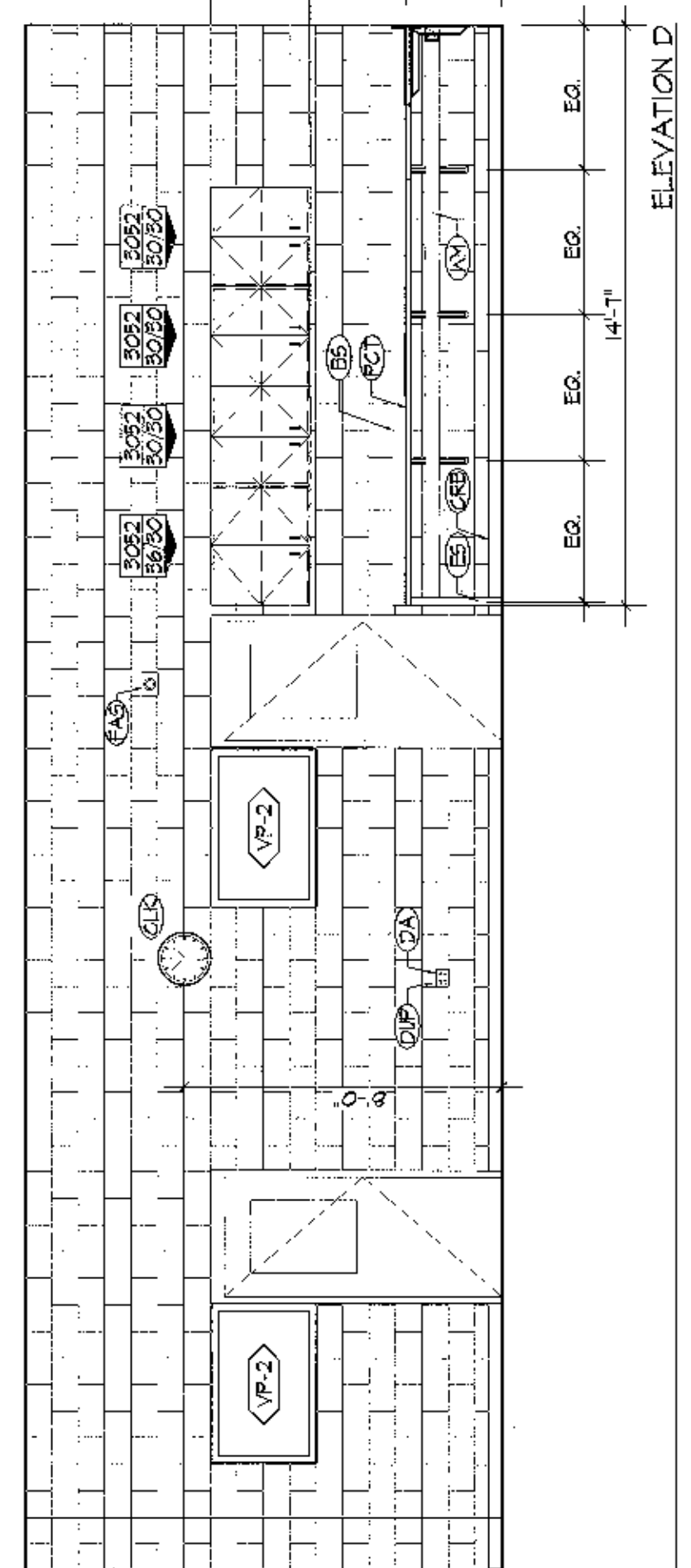
Sheet No. **HS A606**

- GENERAL NOTES**
- INSTALL TILE BACKSPLASH, 1/2" COEFFICIENT OF EXPANSION, 1/2" THICK, 12" X 12" FINISH. PROVIDE FINISHED END PANELS AT ALL EXPOSED ENDS OF CASEWORK.
 - RELOCATED EXISTING CASEWORK TO BE CLEANED, REFINISHED AND REINSTALLED. DAMAGED WALLS AND/OR HINGS WITH SALVAGED MATCHING HARDWARE.
 - OWNER HAS THE RIGHT OF FIRST REFERRAL ON ALL WORK. CONTRACTOR SHALL BE RESPONSIBLE FOR DISPOSAL OF ALL CASEWORK NOT SELECTED FOR REUSE BY THE OWNER.
 - MATCH ADJACENT CASEWORK, UNLESS PANELS TO PROVIDE COVERED RUBBER BASE AT ALL CASEWORK TOP EDGES, UNLESS OTHERWISE NOTED.
 - TOP OF ALL TACKBOARDS AND MARKER BOARDS TO BE MOUNTED AT 10" AFF. UNLESS OTHERWISE NOTED.
 - ALL CASEWORK SHALL BE MOUNTED ON 1/2" X 1/2" X 1/2" ALUMINUM ANGLE BRACKET OTHERWISE NOTED.

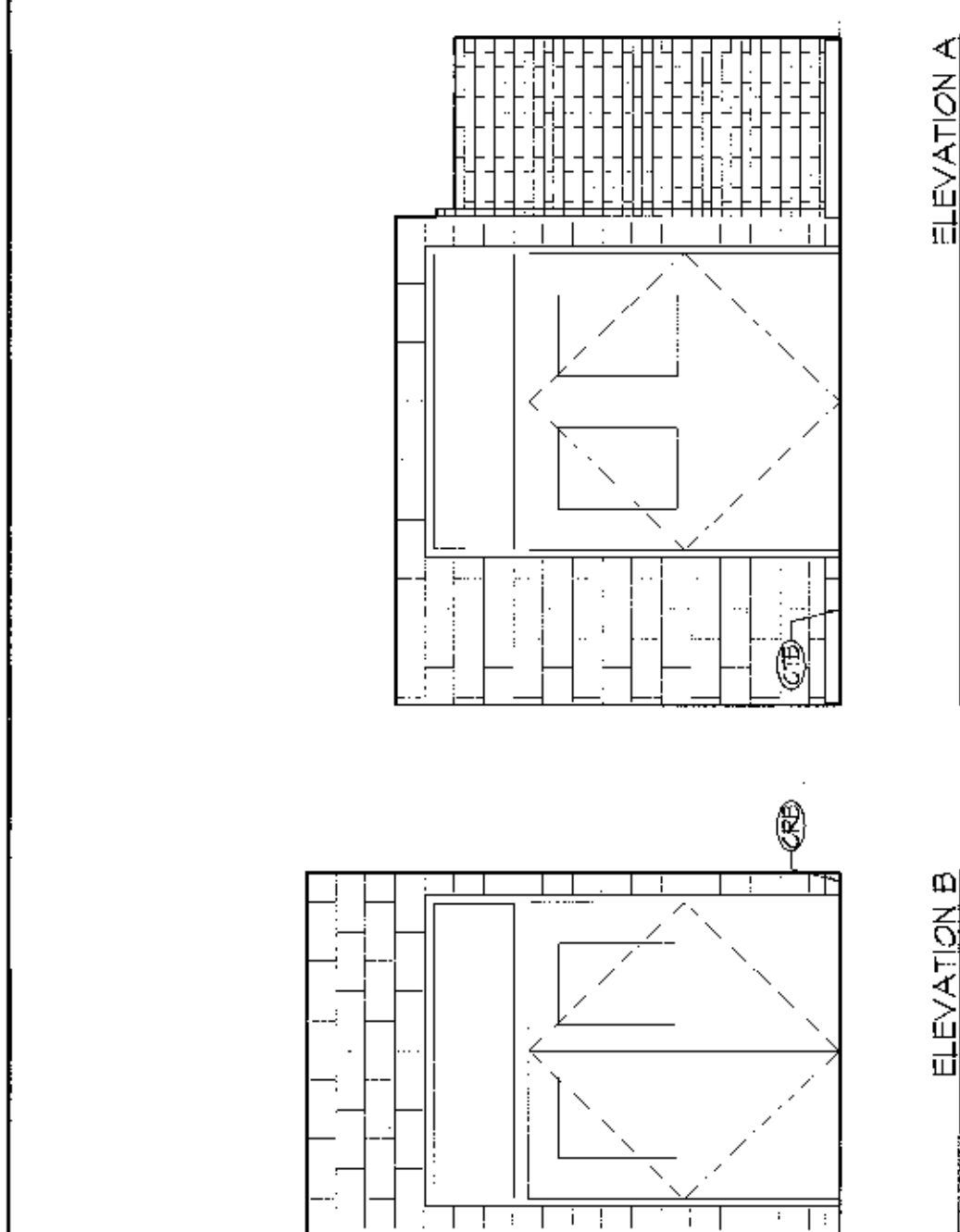
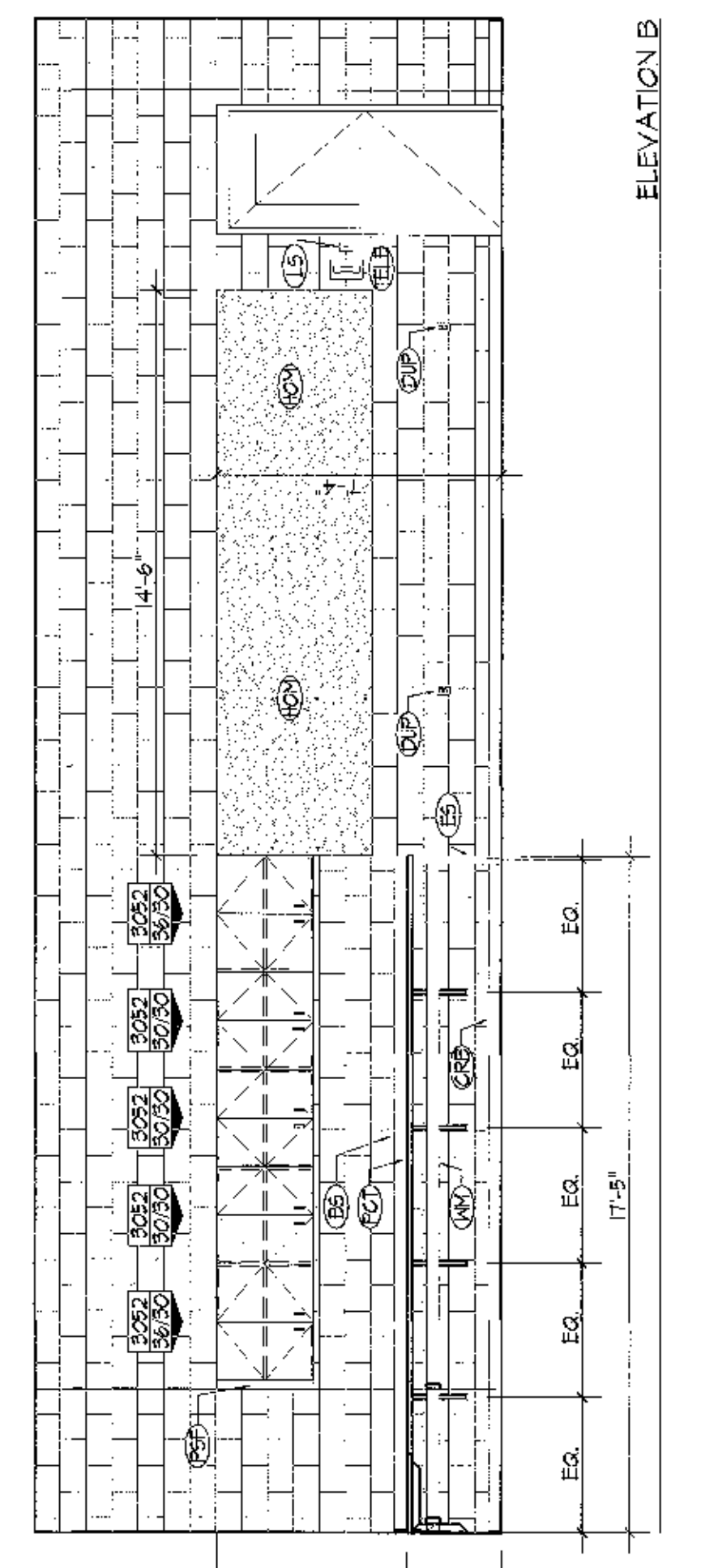
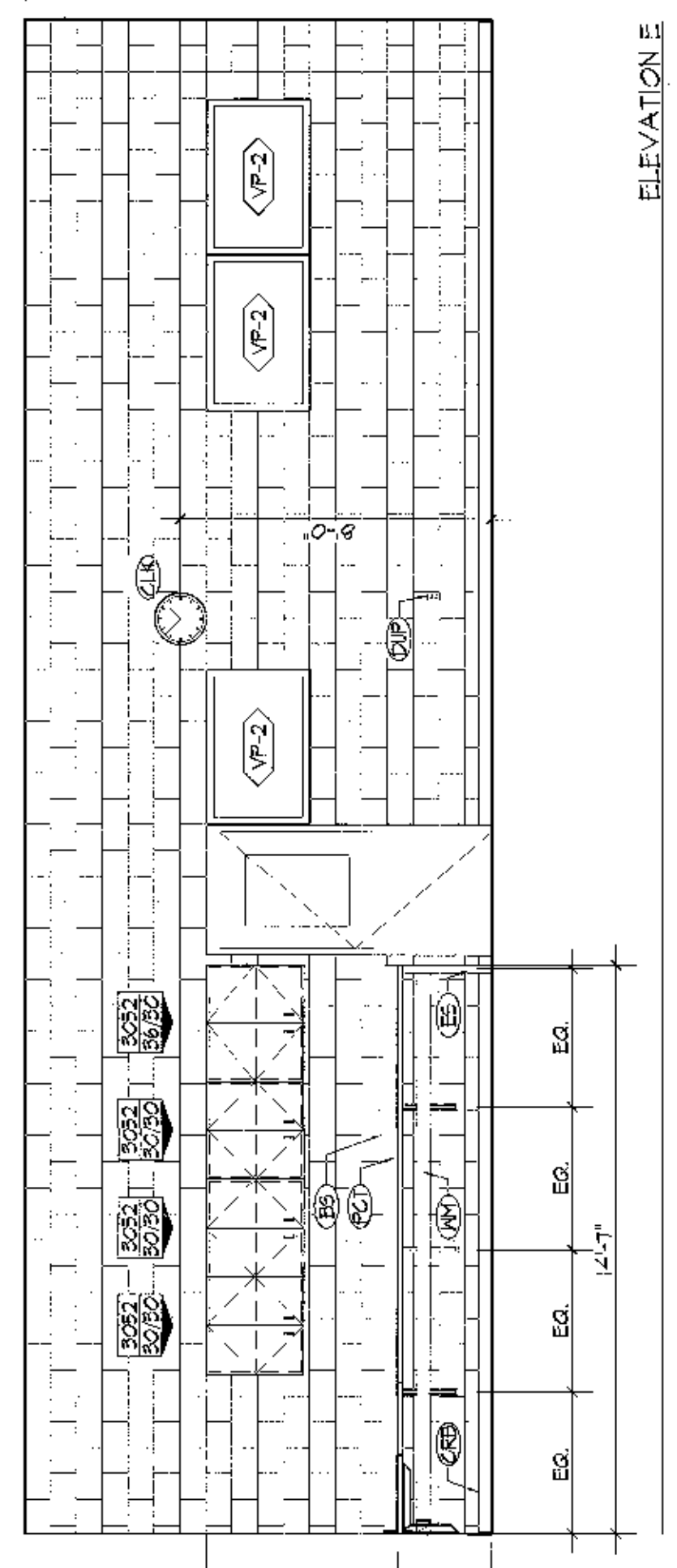
- KEY NOTES**
- ADJUSTABLE STANDARD AND BRACKET SHELVING
 - FLAMMABLE BACKSPLASH, VARIES, 4" HIGH UNLESS NOTED
 - ANALOG CLOCK, REFER TO SPECIFICATIONS
 - CLAYTRAP, SEE "P" DWGS.
 - COPYER N.I.C. SHOWN FOR LOCATION ONLY
 - COVERED RUBBER BASE
 - CERAMIC TILE AS SCHEDULED
 - COVERED TILE BASE AS SCHEDULED
 - DATA OUTLET, COORD. IN "E" DWGS
 - DIFFUSER, REFER TO SPECIFICATIONS
 - MALL MOUNTED DRYING RACK
 - DUPLEX OUTLET, COORD. IN "E" DWGS
 - UNDERCOUNTER DISHWASHER
 - EPOXY BACKSPLASH, VARIES, 4" HIGH UNLESS NOTED
 - EMERGENCY LIGHT, COORD. IN "E" DWGS
 - EMERGENCY SHUT-OFF BUTTON, COORD. IN "E" DWGS
 - EMERGENCY EYE-WASH
 - EMERGENCY EYE-WASH/SHOWER
 - EXT. SINK, COORD. IN "E" DWGS
 - STAINLESS STEEL SINK, SALVAGED & RELOCATED
 - FIRE ALARM/NOTIFICATION, COORD. WITH "E" DWGS
 - FIRE BLANKET CABINET
 - FLOOR DRAIN, COORD. IN "P" DWGS
 - FINISHED END PANEL
 - FIRE EXTINGUISHER (OWNER SUPPLY) INSTALL
 - FULL-HEIGHT REFRIGERATOR
 - MANUAL FIRE PULL, COORD. IN "E" DWGS
 - FABRIC WRAPPED PANEL, REFER TO SPECS
 - GAS COOK-LOCATION
 - GRID FAULT INTERRUPT OUTLET, COORD. IN "E" DWGS
 - GOOGLE GERMICIDAL CABINET
 - 6" X 6" MALLBOARD PARTITION, SEE PLANS
 - INDICATED 2" O.D. GROMMET LOCATION
 - 6" X 6" MALLBOARD SOFFIT
 - HOT & COLD WATER, SEE "P" DWGS
 - 4" X 8" INCH MAGNETIC PAINTED FACET TO MALL
 - LIGHT SWITCH, COORD. IN "E" DWGS
 - LIQUID WASTE NEUTRALIZATION TANK, SEE "P" DWGS
 - MARKER BOARD (SIZE INDICATED)
 - MICROSCOPE CABINET
 - MALL MTD MOTION SENSOR, COORD. IN "E" DWGS
 - OVERHEAD COILING DOOR, SEE DOOR SCHEDULE
 - PRIVACY CURTAIN IN CEILING MOUNTED TRACK
 - FLAMMABLE COUNTER TOP CONTIGUOUS
 - PAPER TOWEL DISPENSER (OWNER SUPPLY) INSTALL
 - FLAMMABLE FILLER STRIP
 - QUAD OUTLET, COORD. IN "E" DWGS
 - RECESSED FLOOR RECEPT, COORD. IN "E" DWGS
 - INTERACTIVE MARKER BOARD, COORD. IN "E" DWGS
 - SHOWER CURTAIN IN C.G. MTD. TRACK
 - SOAP DISPENSER (OWNER FINISHED) GC INSTALL
 - SPECIAL PURPOSE OUTLET - RECEPTACLE REFER TO "E" DWGS FOR SIZE AND LOCATION
 - STAINLESS STEEL SINK, SEE "P" DWGS FOR SCHEDULE
 - FRAMED TASKABLE SURFACE END (SIZE INDICATED)
 - PA SYSTEM HANDSET, COORD. IN "E" DWGS
 - CABLE TV CONNECTION OUTLET, COORD. IN "E" DWGS
 - UNDER-COUNTER REFRIGERATOR
 - WOOD FILLER STRIP
 - WIRE HOLD



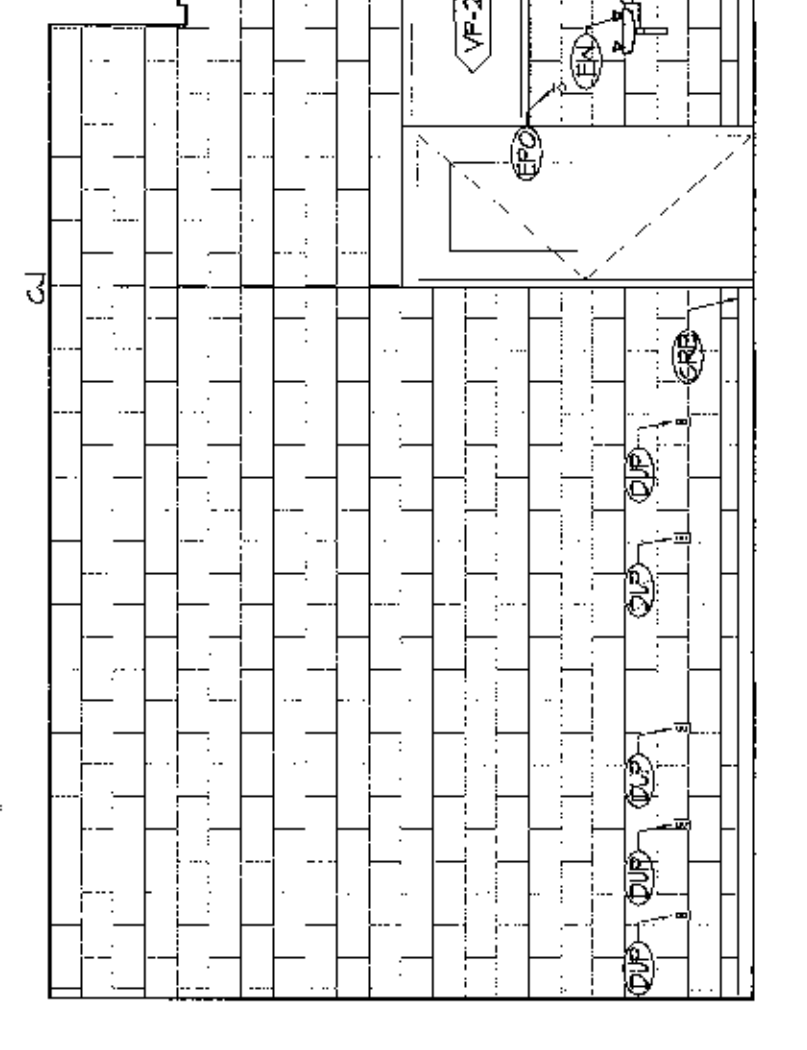
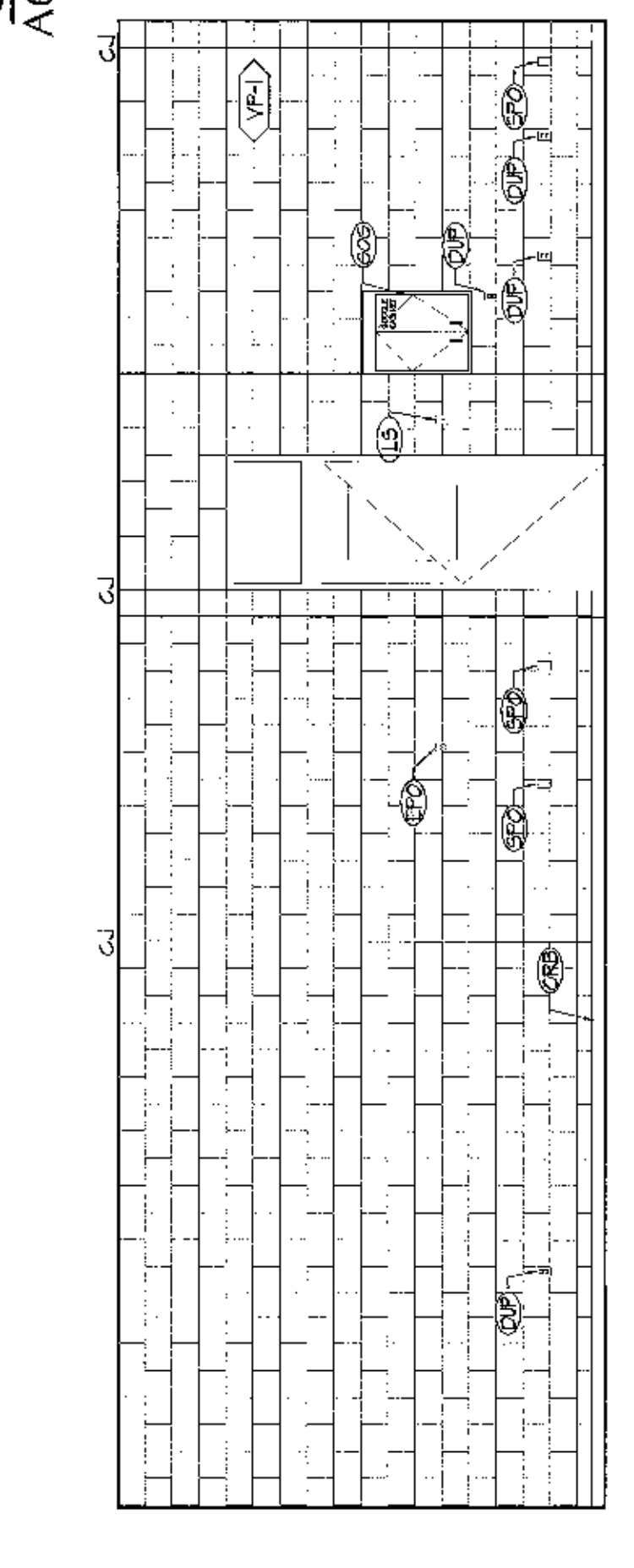
**2 INTERIOR ELEVATIONS-
 RM. 22 & 24 TECHNOLOGY SHOP**
 A606 1/8"=1'-0"



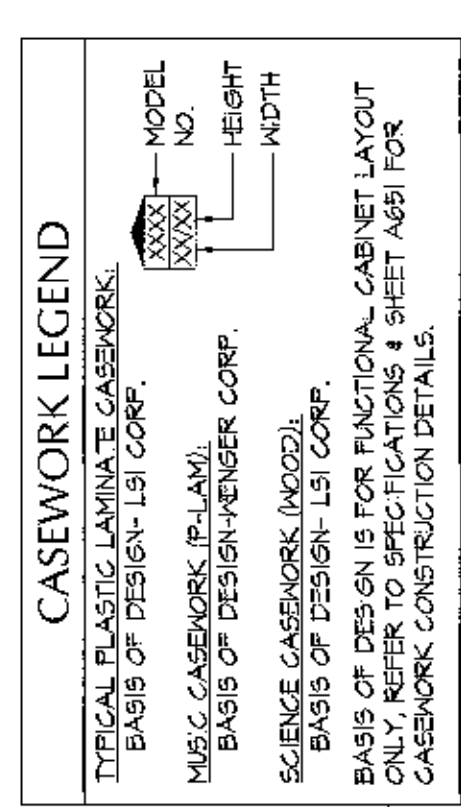
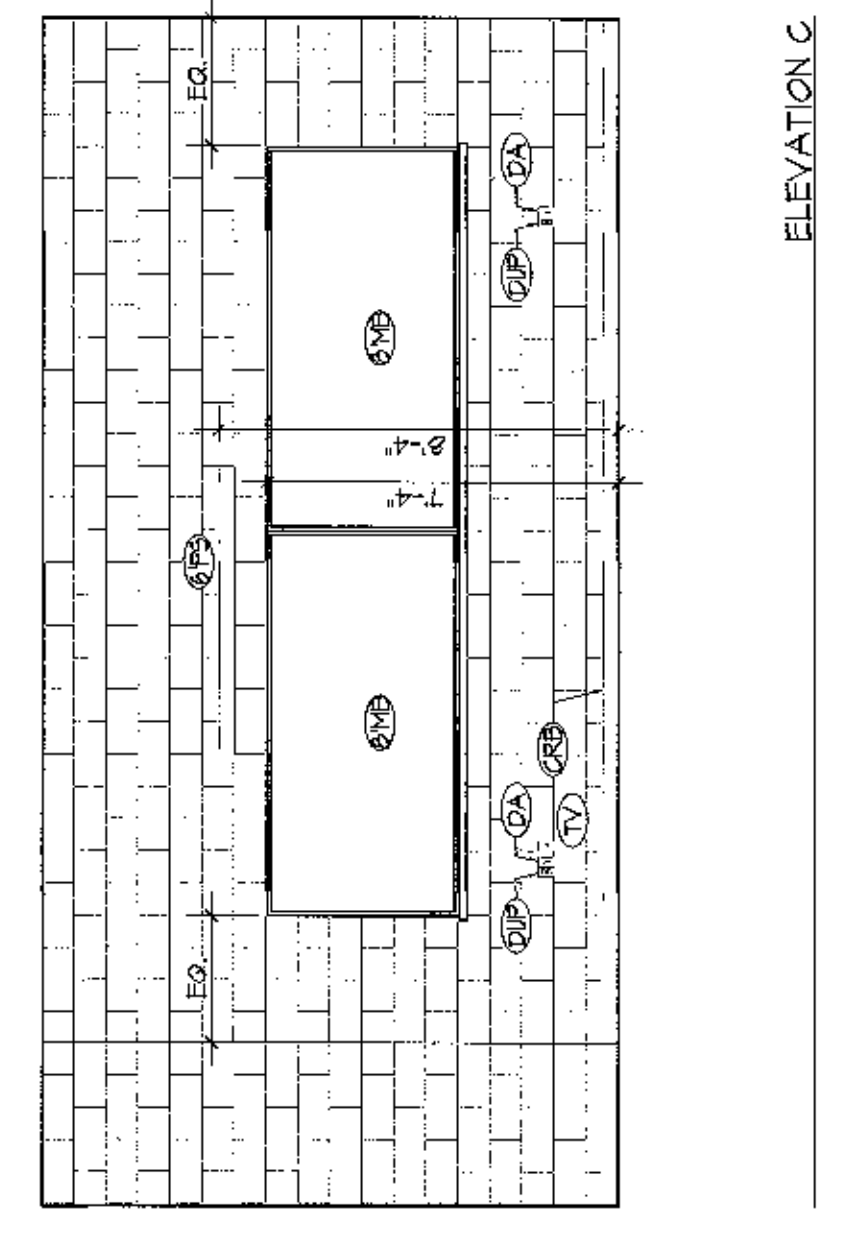
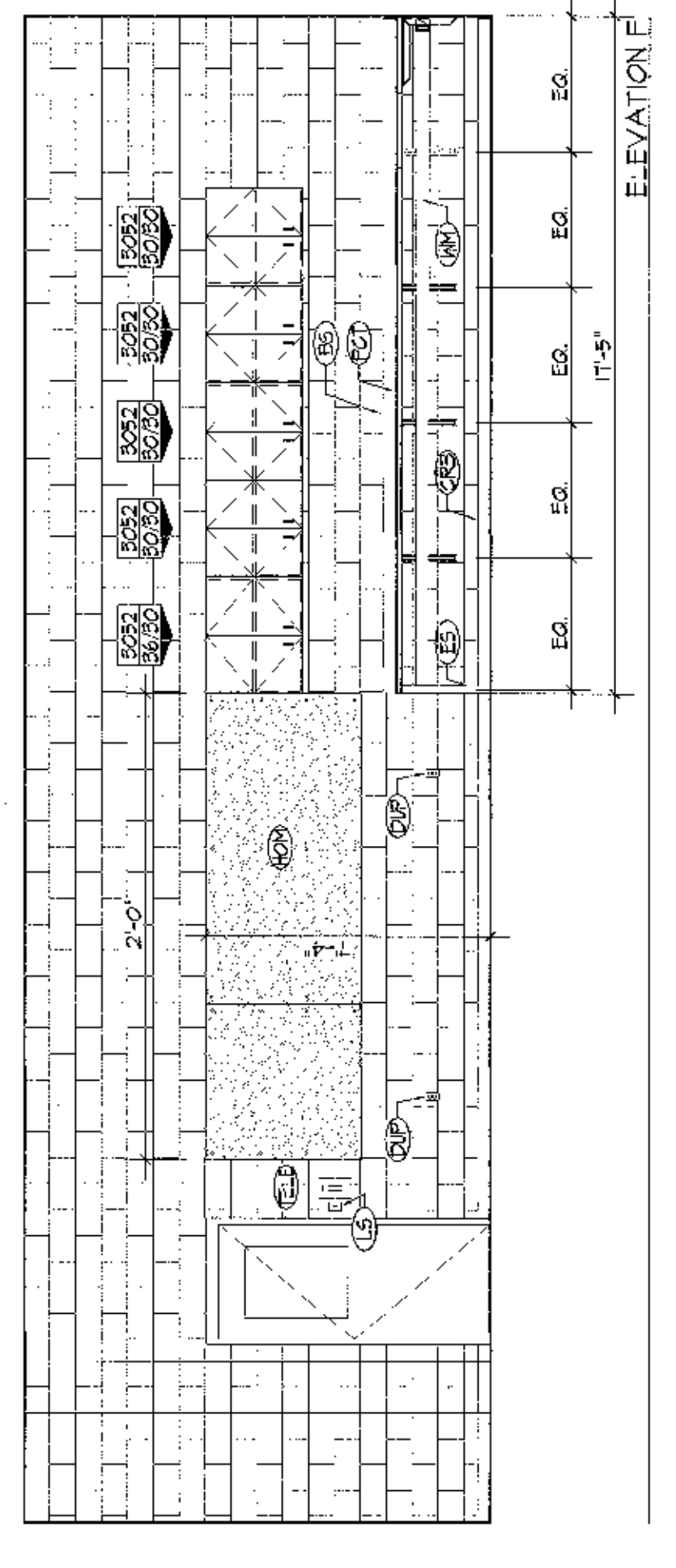
ELEVATION B



**3 INTERIOR ELEVATIONS-
 C111**
 A606 1/8"=1'-0"



ELEVATION C



**1 INTERIOR ELEVATIONS-
 RMS 20 & 26 CAD CLASSROOMS**
 A606 1/8"=1'-0"

