

HOOSIC VALLEY CENTRAL SCHOOL DISTRICT H. V. JUNIOR SENIOR HIGH SCHOOL ADDITIONS, ALTERATIONS & SITEWORK



Down To: 100	Scale: 1/8" = 1'-0"
Created By: JJK	Scale: 1/8" = 1'-0"
CSA Project #	3/07/05
Date	07/17/2007

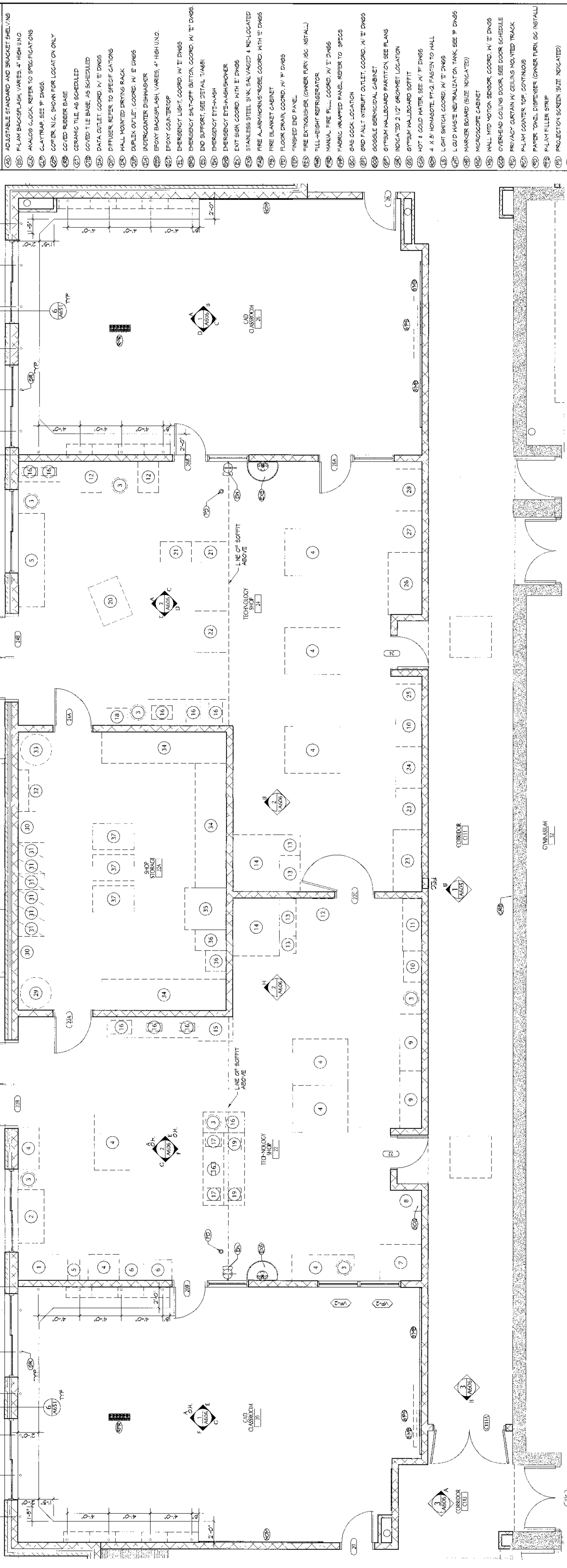
ENLARGED PLANS AND INTERIOR ELEVATIONS-TECHNOLOGY

Sheet No. **HS A605**

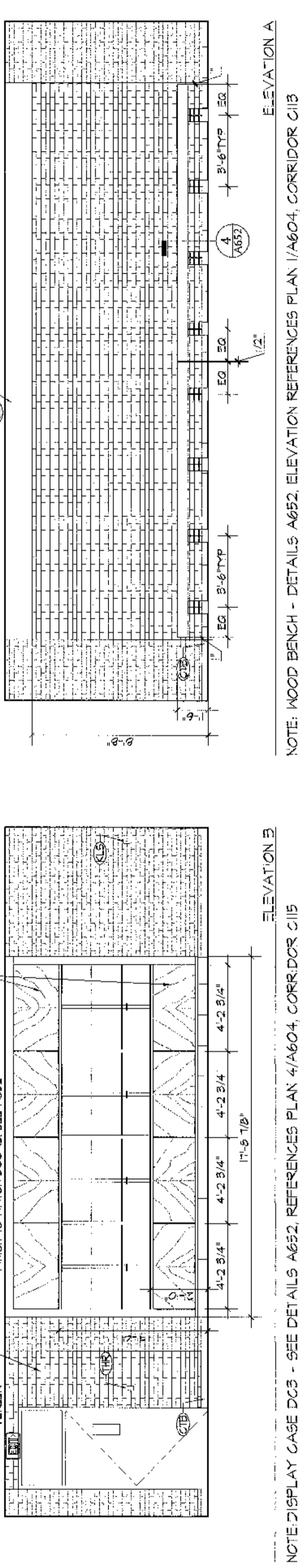
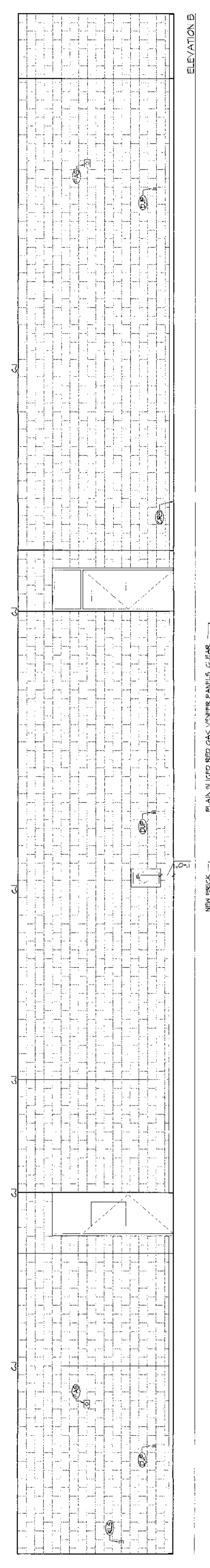
SHOP EQUIPMENT KEY

NOTE: ALL EQUIPMENT IS EXISTING TO BE RELOCATED AS SHOWN ON PLAN UNLESS NOTED OTHERWISE.

1 FORGE	9 LATHE	17 SERRILL SAW	24 PASTERERS CABINET
2 POWDRY	10 SUPPLY CABINET	18 FLOOR SANDER	25 40T SUE CABINET
3 VAGUM	11 TOOL CABINET	19 BAND SAW	26 DRINKING CABINET
4 WORK TABLE	12 DRILL PRESS	20 PLANER	27 DPT TOOLS
5 SHOP SAW	13 FLAMMABLE CAB.	21 BAND SAW	28 PORTFOLIO CABINET
6 WELDER	14 SPRAY BOOTH	22 TABLE SAW	29 AIR COMPRESSOR
7 MILL	15 REPL. AC. COORD. (N/E DWS)	23 TOOL CABINET	30 STORAGE CABINET
8 SAFETY CABINET	16 GRINDERS/SANDER	31 TOOLS	32 GART
		33 FILE CABINET	34 CLAMPS CABINET
		35 BARREL	35 KODAK STORAGE
		36 DRILL PRESS	36 DPT TOOLS
		37 FLAMMABLE CAB.	37 PORTFOLIO CABINET
		38 SPRAY BOOTH	38 AIR COMPRESSOR
		39 REPL. AC. COORD. (N/E DWS)	39 TOOL CABINET
		40 GRINDERS/SANDER	40 STORAGE CABINET
		41 TOOLS	41 GART
		42 FILE CABINET	42 CLAMPS CABINET
		43 BARREL	43 KODAK STORAGE
		44 DRILL PRESS	44 DPT TOOLS
		45 FLAMMABLE CAB.	45 PORTFOLIO CABINET
		46 SPRAY BOOTH	46 AIR COMPRESSOR
		47 REPL. AC. COORD. (N/E DWS)	47 TOOL CABINET
		48 GRINDERS/SANDER	48 STORAGE CABINET
		49 TOOLS	49 GART
		50 FILE CABINET	50 CLAMPS CABINET
		51 BARREL	51 KODAK STORAGE
		52 DRILL PRESS	52 DPT TOOLS
		53 FLAMMABLE CAB.	53 PORTFOLIO CABINET
		54 SPRAY BOOTH	54 AIR COMPRESSOR
		55 REPL. AC. COORD. (N/E DWS)	55 TOOL CABINET
		56 GRINDERS/SANDER	56 STORAGE CABINET
		57 TOOLS	57 GART
		58 FILE CABINET	58 CLAMPS CABINET
		59 BARREL	59 KODAK STORAGE
		60 DRILL PRESS	60 DPT TOOLS
		61 FLAMMABLE CAB.	61 PORTFOLIO CABINET
		62 SPRAY BOOTH	62 AIR COMPRESSOR
		63 REPL. AC. COORD. (N/E DWS)	63 TOOL CABINET
		64 GRINDERS/SANDER	64 STORAGE CABINET
		65 TOOLS	65 GART
		66 FILE CABINET	66 CLAMPS CABINET
		67 BARREL	67 KODAK STORAGE
		68 DRILL PRESS	68 DPT TOOLS
		69 FLAMMABLE CAB.	69 PORTFOLIO CABINET
		70 SPRAY BOOTH	70 AIR COMPRESSOR
		71 REPL. AC. COORD. (N/E DWS)	71 TOOL CABINET
		72 GRINDERS/SANDER	72 STORAGE CABINET
		73 TOOLS	73 GART
		74 FILE CABINET	74 CLAMPS CABINET
		75 BARREL	75 KODAK STORAGE
		76 DRILL PRESS	76 DPT TOOLS
		77 FLAMMABLE CAB.	77 PORTFOLIO CABINET
		78 SPRAY BOOTH	78 AIR COMPRESSOR
		79 REPL. AC. COORD. (N/E DWS)	79 TOOL CABINET
		80 GRINDERS/SANDER	80 STORAGE CABINET
		81 TOOLS	81 GART
		82 FILE CABINET	82 CLAMPS CABINET
		83 BARREL	83 KODAK STORAGE
		84 DRILL PRESS	84 DPT TOOLS
		85 FLAMMABLE CAB.	85 PORTFOLIO CABINET
		86 SPRAY BOOTH	86 AIR COMPRESSOR
		87 REPL. AC. COORD. (N/E DWS)	87 TOOL CABINET
		88 GRINDERS/SANDER	88 STORAGE CABINET
		89 TOOLS	89 GART
		90 FILE CABINET	90 CLAMPS CABINET
		91 BARREL	91 KODAK STORAGE
		92 DRILL PRESS	92 DPT TOOLS
		93 FLAMMABLE CAB.	93 PORTFOLIO CABINET
		94 SPRAY BOOTH	94 AIR COMPRESSOR
		95 REPL. AC. COORD. (N/E DWS)	95 TOOL CABINET
		96 GRINDERS/SANDER	96 STORAGE CABINET
		97 TOOLS	97 GART
		98 FILE CABINET	98 CLAMPS CABINET
		99 BARREL	99 KODAK STORAGE
		100 DRILL PRESS	100 DPT TOOLS



2 ENLARGED FLOOR PLAN- TECHNOLOGY 22 & 24, CAD CLASSROOM 20 & 26, CORRIDOR C111
A605 1/8" = 1'-0"

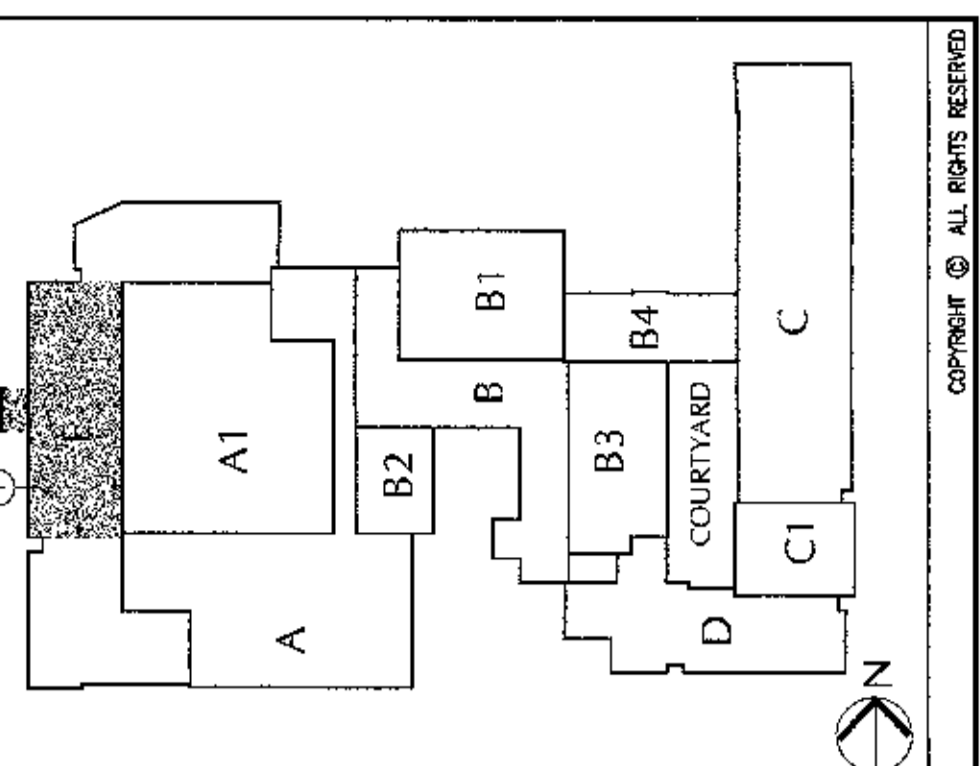


GENERAL NOTES

1. INTERIOR PANELS LOCATED SHOWN AND NOTED OTHERWISE TO BE RELOCATED AS SHOWN ON PLAN UNLESS NOTED OTHERWISE.
2. PROVIDE FINISHED END PANELS AT ALL EXPOSED ENDS OF CABINETWORK.
3. RELOCATED EXISTING CABINETWORK TO BE CLEANED, REPAIRED AND REFINISHED. REFINISHING TO MATCH EXISTING HARDWARE.
4. OWNER HAS THE RIGHT OF FIRST REFUSAL ON ALL RELOCATED EXISTING CABINETWORK. NOT RELOCATED EXISTING CABINETWORK IS THE RESPONSIBILITY OF THE OWNER.
5. INTERIOR PANELS AND FINISHED END PANELS TO BE PROVIDED BY OTHERS.
6. PROVIDE GOULD RUBBER BASE AT ALL CABINETS THE KIDS JUNG.
7. TOP OF ALL TAGBOARDS AND MARKER BOARDS TO BE MOUNTED AT 1'-0" AFF. UNLESS NOTED OTHERWISE.
8. ALL CLOCKS AND PROJECTION SCREENS TO BE MOUNTED AT 5'-0" AFF. UNLESS NOTED OTHERWISE.

KEY NOTES

1. ADJUSTABLE STANDARD AND BRACKET SHELVING
2. FLAMMABLE CABINET, VARIETIES, 4" HIGH UNDO
3. ANALOG CLOCK, REFER TO SPECIFICATIONS
4. CANTILEVER SEE 'P' DWGS
5. COATED RUBBER BASE
6. GRANITE TILE AS SCHEDULED
7. COATED TILE BASE, AS SCHEDULED
8. DATA OUTLET, COORD. N/E DWGS
9. DPT/USER, REFER TO SPECIFICATIONS
10. WALL MOUNTED DRYING RACK
11. DUPLEX OUTLET, COORD. N/E DWGS
12. INTERCOMMER DISHWASHER
13. BROOK BACKSPLASH, VARIETIES, 4" HIGH UNDO
14. EMERGENCY LIGHT, COORD. N/E DWGS
15. EMERGENCY SHUT-OFF BUTTON, COORD. N/E DWGS
16. END SUPPORT, SEE DETAIL 'A681'
17. EMERGENCY EYE-WASH/SHOWER
18. EMERGENCY EYE-WASH
19. EXIT SIGN, COORD. N/E DWGS
20. STAINLESS STEEL SINK, SALVAGED & RELOCATED
21. FIRE ALARMS/NOTICE, COORD. N/E DWGS
22. FIRE BLANKET CABINET
23. FLOOR DRAIN, COORD. N/E DWGS
24. FINISHED END PANEL
25. FIRE EXTINGUISHER (OWNER FURNISH, GC INSTALL)
26. TALL-HIGH REFRIGERATOR
27. MANUAL FIRE FIGHTING, COORD. N/E DWGS
28. FABRIC WRAPPED PANEL, REFER TO SPECS
29. GAS COOK LOCATION
30. GPO FALT INTERNET OUTLET, COORD. N/E DWGS
31. GOOGLE SERVICIAL CABINET
32. STYRENE WALLBOARD PARTITION, SEE PLANS
33. INDICATED 2' 0" GROUND LOCATION
34. STYRENE WALLBOARD SOFFIT
35. HOT & COLD WATER, SEE 'N' DWGS
36. 4" X 8" NOVASOTE, PFC-FASTEN TO WALL
37. LIGHT SWITCH, COORD. N/E DWGS
38. LIQUID WASTE NEUTRALIZATION TANK, SEE 'P' DWGS
39. MARKER BOARD (SIZE INDICATED)
40. MICROSCOPE CABINET
41. WALL MTD MOTION SENSOR, COORD. N/E DWGS
42. OVERHEAD COLLING DOOR, SEE DOOR SCHEDULE
43. PRIVACY CURTAIN N/ CEILING MOUNTED TRACK
44. PLAY COUNTER TOP CONTIGUOUS
45. PAPER TOWEL DISPENSER (OWNER FURNISH, GC INSTALL)
46. PLAY FILLER STRIP
47. PROJECTION SCREEN (SIZE INDICATED)
48. WARD OUTLET, COORD. N/E DWGS
49. RECESSED T-SLOT RECEIPT, COORD. N/E DWGS
50. INTERACTIVE MARKER BOARD (OWNER FURNISHED, GC INSTALL), COORD. N/E DWGS
51. BLOWER CURTAIN N/ GAS MTD TRACK
52. SOAP DISPENSER (OWNER FURNISHED, GC INSTALL)
53. SPECIAL PURPOSE OUTLET - RECEPTACLE REFER TO 'E' DWGS FOR SIZE AND LOCATION
54. STAINLESS STEEL SINK, SEE 'P' DWGS FOR SCHEDULE
55. FRAMED TACKABLE SURFACE BRD (SIZE INDICATED)
56. P.A. SYSTEM HANGSET, COORD. N/E DWGS
57. CABLE TV CONNECTION OUTLET, COORD. N/E DWGS
58. UNDER-COUNTER REFRIGERATOR
59. WOOD FILLER STRIP
60. WIRE MOLD
61. WOOD TRIM



1 INTERIOR ELEVATIONS CORRIDOR C111, C113 & C115
A605 1/8" = 1'-0"

NOTE: DISPLAY CASE DC3 - SEE DETAILS A652. REFERENCES PLAN 4/1604, CORRIDOR C115

NOTE: WOOD BENCH - DETAILS A652. ELEVATION REFERENCES PLAN 1/1604, CORRIDOR C115

